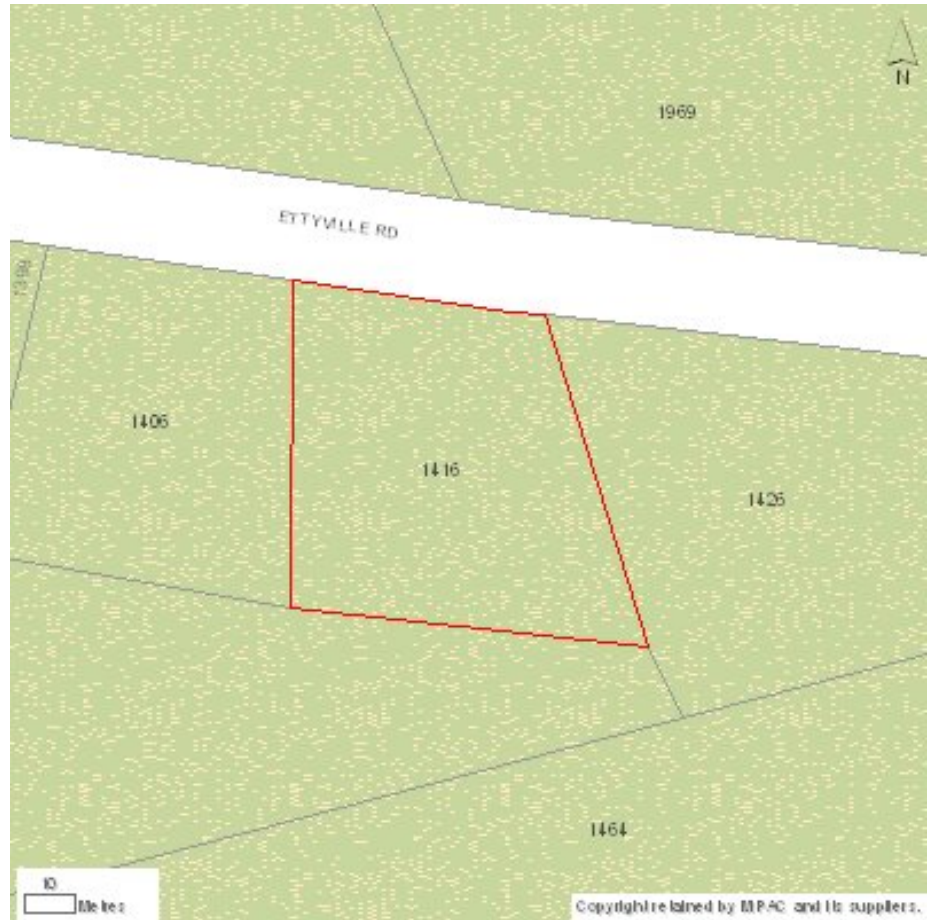


Property Address

1416 ETTYVILLE RD

Single Property Map



Disclaimer: contents provided on an "as is" and "as available" basis. MPAC and its suppliers make no warranties or representations regarding contents (including accuracy of measurements and currency of contents). Not a plan of survey.



# Detailed Property Report

Generated on 2/2/2009

<b>Property Address</b>	1416 ETTYVILLE RD
<b>Roll Number</b>	0212026011090000000
<b>Legal Description</b>	CON 11 PT LOT 24 RP46R3358 PART 1
<b>Property Code &amp; Description</b>	301 - Single-Family Detached (Not On Water)
<b>Homogeneous Neighbourhood</b>	D11
<b>Current Value Assessment (CVA)</b>	\$ 91,750

Realty Tax Class (RTC)	Realty Tax Qualifier (RTQ)	Realty Portion
R - Residential	T - Taxable: Full	\$ 91,750

<b>Tenant Tax Liable (TTL)</b>	-
<b>Unit Class</b>	-

## Structure Details

<b>Structure Code &amp; Description</b>	301 - Single Family Detached	
	Year Built	1945
	Full Storeys	1
	Partial Storeys	0
	Bedrooms	2
	Total Floor Area (Above Grade)	662
	Basement Area	662
	Bsmt Finished Area	0
	Heat Type	FA - Forced Air (Gas/Oil) Heat Pump / Solar

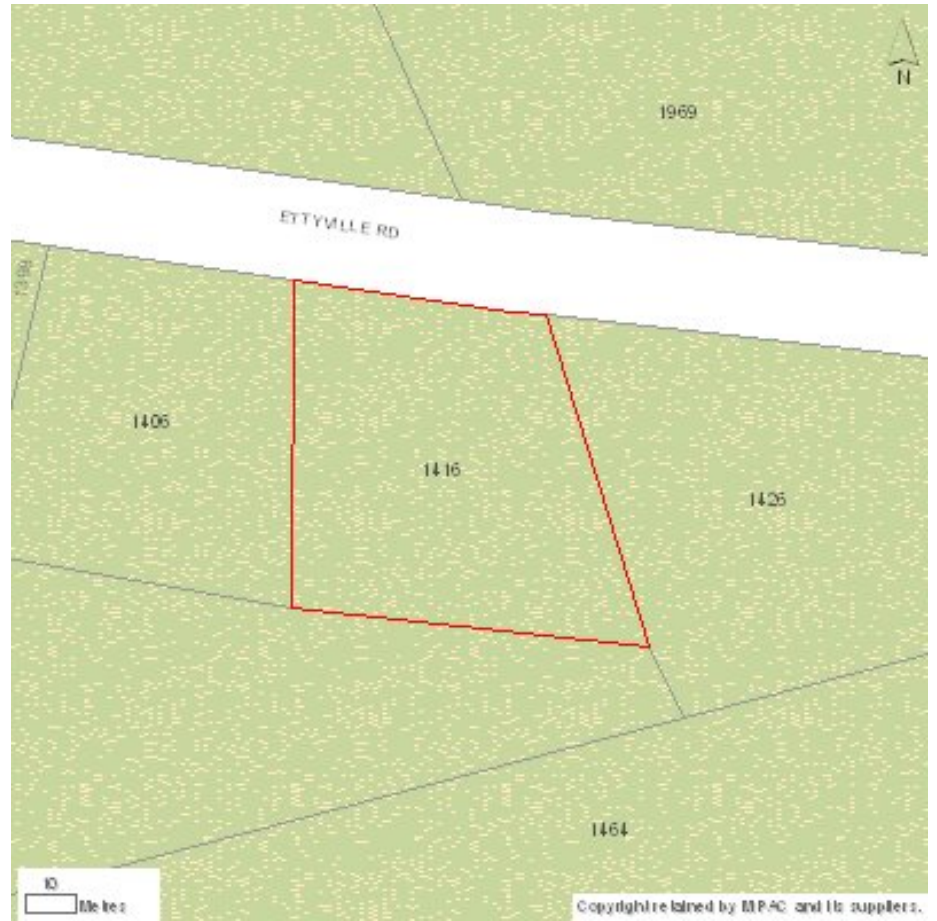
## Lot Detail

<b>Frontage</b>	134.17
<b>Depth</b>	221.78
<b>Site Area</b>	.69

## Sale

<b>Last Valid Sale Date</b>	1989/11	<b>Last Valid Sale Amount</b>	\$ 35,000
-----------------------------	---------	-------------------------------	-----------

## Single Property Map



Disclaimer: contents provided on an "as is" and "as available" basis. MPAC and its suppliers make no warranties or representations regarding contents (including accuracy of measurements and currency of contents). Not a plan of survey.

\* NOTE: Current Value Assessment in this report is based on a January 1, 2008 Valuation Date and reflects the value returned to the municipality on the 2008 Assessment Roll for the 2009 taxation year. For more information regarding Assessment Updates visit [www.mpac.ca](http://www.mpac.ca) and click on "About MPAC".